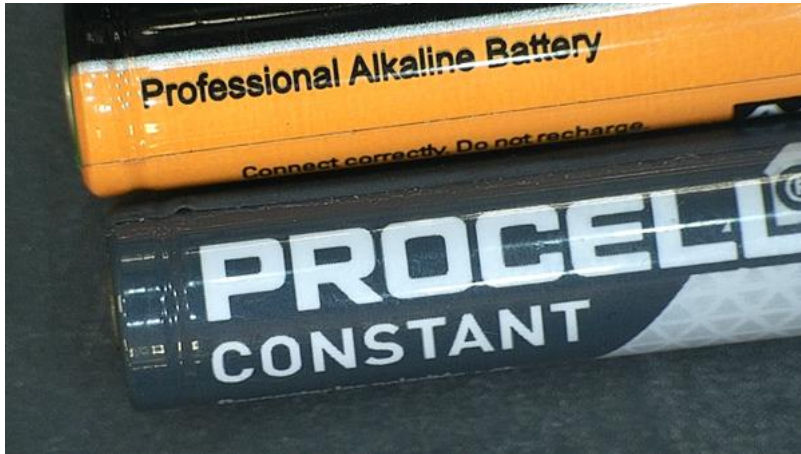


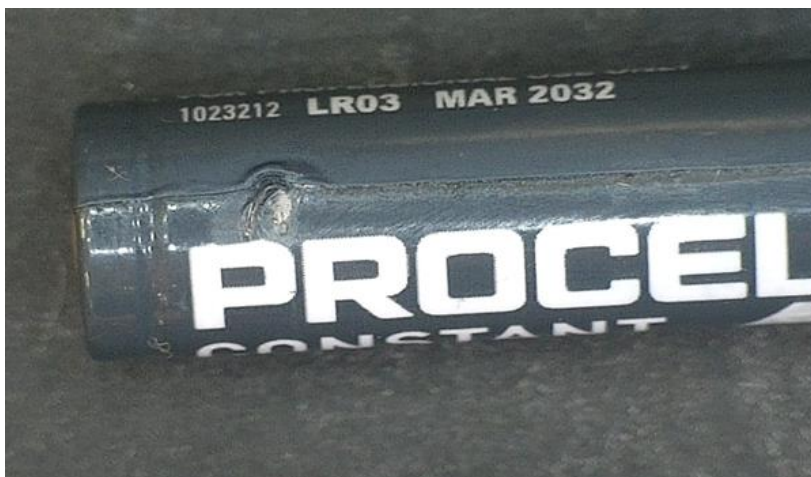
Procell Constant Batteries. Fire risk.

Artistic Licence uses AAA batteries in a number of products including those that use metal spring clips. We have used the Duracell Professional Alkaline Battery for many years with no problem (this is the orange coloured cell below).



We recently re-ordered and were supplied Procell constant. Our supplier did not notify us of a design change. (This is the dark cell above).

We discovered that the plastic coating at the battery seam is damaged by inserting the battery. If the battery clips are metal, this causes a short circuit. It seems that the battery chemistry has also been changed as a short circuit causes a rapid increase in temperature which could potentially cause a fire hazard. See melt mark below.



We have contacted Duracell via our supplier. They are aware of the problem. Artistic Licence advises all customers to avoid the Procell Constant battery.